



مرقاة

M R Q A H

Company  
Profile

# Index

About .....	2
Mission Statement .....	3
Introduction .....	4
Technical Aspects .....	5
Products And Services .....	6
Brass Fitting .....	7
Plumbing .....	23
Engineering Services And Special Manufacturing .....	36



## About MRQAH

Welcome to [MRQAH], your trusted source for high-quality brass fittings and plumbing solutions. With years of experience in the industry, we pride ourselves on delivering exceptional products that meet the highest standards of durability, reliability, and performance.



مرقاة  
M R Q A H

## Mission Statement

At MRQAH, our mission is to revolutionize the plumbing industry by providing top-tier brass fittings and fluid solutions that guarantee safety, efficiency, and durability. We are dedicated to delivering exceptional quality products that meet the diverse needs of our customers, fostering innovation, and upholding the highest standards of customer service. Through our commitment to excellence and sustainable practices, we aim to contribute positively to the communities we serve and the environment.







## Introduction

Welcome to our comprehensive Brass Fitting and Plumbing Catalog, where quality meets precision. Our catalog is designed to provide you with a detailed overview of our extensive range of brass fittings and plumbing solutions, ensuring you have access to the highest standards of durability, reliability, and performance. Whether you're a professional plumber, contractor, or a DIY enthusiast, our carefully curated selection caters to all your needs, from simple household repairs to complex industrial installations. Dive in and discover how our products can help you achieve exceptional results in your projects, backed by our commitment to excellence and innovation in the plumbing industry.



## TECHNICAL ASPECTS

### Material used in our work

ALLOY CW617N - CuZn40Pb2

INT. REFERENCE ( DIN CEN – EN 12165)

OTHER COMPOSITIONS AVAILABLE AS PER CLIENT REQUEST

ELEMENT		CONTENT %
Cu		58
Pb	<	1.87
Fe	<	0.18

Chemical analysis  
available upon  
request

### Finishing:

A- yellow normal brass color

b- Nickle coated surface





# Products And Services

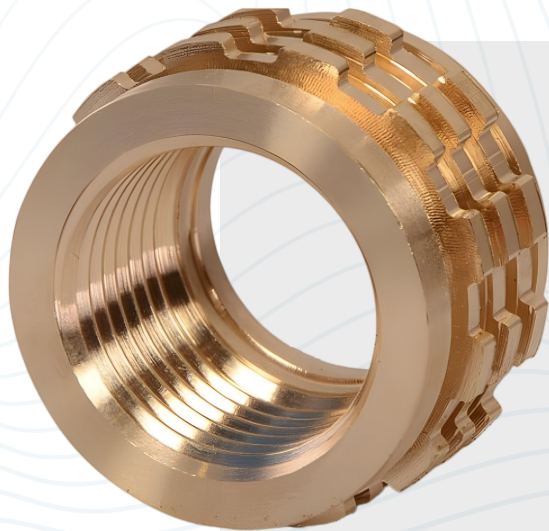
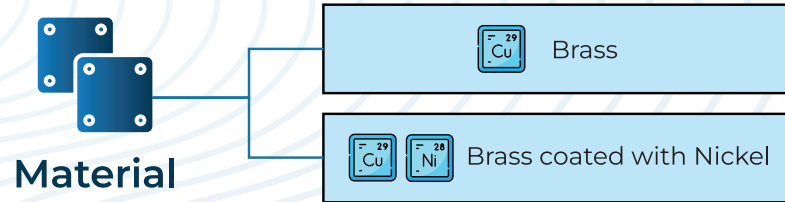


**Brass  
Fitting**





## Ppr Inserts

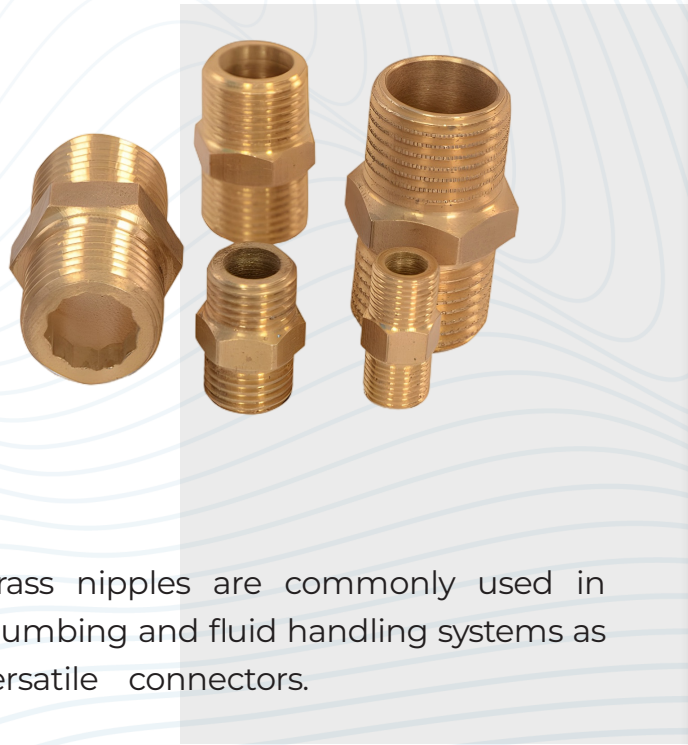
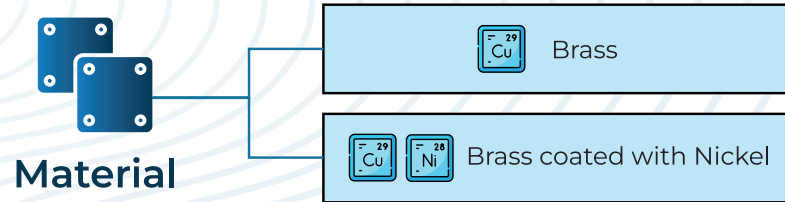


The main usage of PPR inserts in brass fittings is to ensure a secure and reliable connection between PPR pipes and brass fittings in plumbing and fluid handling systems.

SIZE	Weight in carton	Qty in carton	
"1/2	15 kg	500 piece	From 25 : 45 gm/ piece
"3/4	20kg	320 piece	From 60:65 gm/ piece
"1	17.5 kg	250 piece	From 70:75 gm/ piece
"1 1/2	18 kg	150 piece	120 gm
"2	19 kg	100 piece	190 gm
	Calculations for lightest weight per piece		Weight of piece is as client request



## Brass Nipple



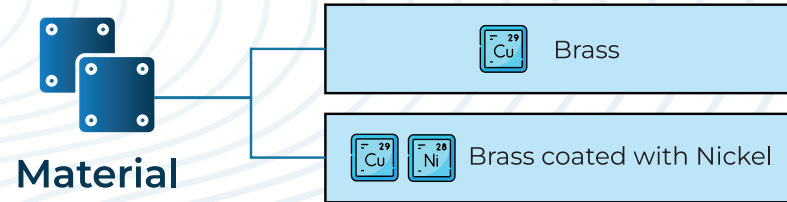
Brass nipples are commonly used in plumbing and fluid handling systems as versatile connectors.

SIZE	Weight in carton	Qty in carton	
"1/8	15 kg	1000 piece	From 10 : 15 gm/ piece
"3/8	16 kg	800 piece	From 15 : 20 gm/ piece
"1/2	16 kg	400 piece	From 35 : 45 gm/ piece
"3/4	18 kg	300 piece	From 55 : 65 gm/ piece
"1	16 kg	200 piece	From 75 : 85 gm/ piece
	Calculations for lightest weight per piece		Weight of piece is as client request





## Brass Reducer M

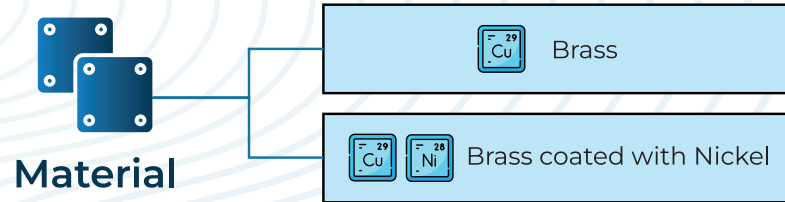


The usage of brass reducers in brass fittings is to facilitate the connection and adaptation of plumbing systems by accommodating changes in pipe size or diameter.

SIZE	Weight in carton	Qty in carton	
1/2"	25 kg	500 piece	From 30 : 50 gm/ piece
3/4"	14 kg	200 piece	70 gm
1"	16,5 kg	150 piece	110 gm
1 1/2"	16 kg	80 piece	From 190 : 200
gm/piece			
2"	13 kg	50 piece	250 gm



## Brass Extension Bushing Kit



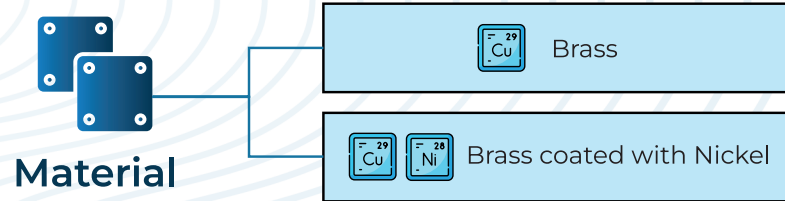
The usage of a Brass Extension Bushing Kit in brass fittings is to extend pipe lengths, facilitate size transitions between pipes or fittings, and adapt plumbing systems to meet specific installation requirements

SIZE	Weight in carton	Qty in carton	
1/2"	26 kg	200 piece	From 90 : 120 gm/ piece
3/4"			
1"			
1 1/2"			
2"			
	Calculations for lightest weight per piece		Weight of piece is as client request





## Brass Hex End Cap

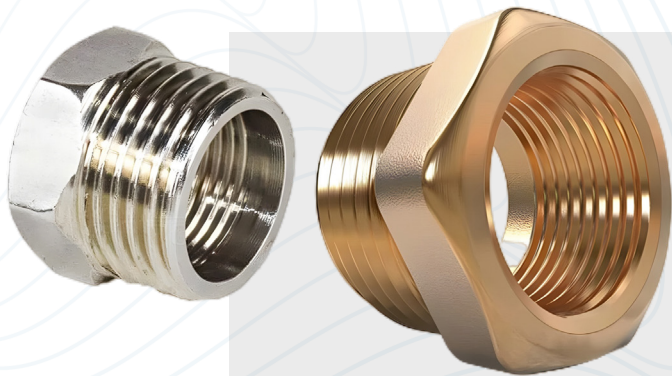
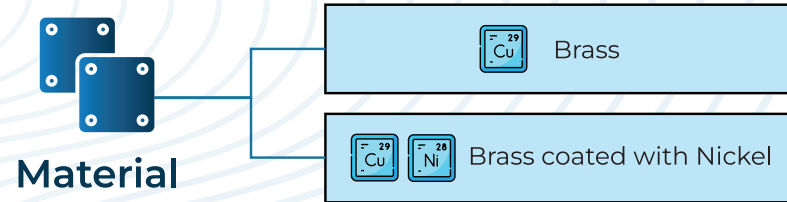


The main usage of Brass Hex End Caps in brass fittings is to cap and seal the ends of pipes or fittings in plumbing systems, providing protection, containment, and closure where needed.

SIZE	Weight in carton	Qty in carton	
1/2"	15 kg	600 piece	From 25 : 45 gm/ piece
3/4"	20 kg	400 piece	From 50 : 70 gm/ piece
1"	24 kg	300 piece	From 80 : 90 gm/ piece
1 1/2"	20 kg	200 piece	From 110 : 100 gm/ piece
2"			
	Calculations for lightest weight per piece		Weight of piece is as client request



## Brass Nipple



The main usage of Brass Nipples in brass fittings is to provide a reliable and flexible connection between pipes and fittings in plumbing and fluid handling systems.

SIZE	Weight in carton	Qty in carton	
1/2 * 3/8"	17,5 kg	700 piece	From 25 : 45 gm/ piece
1/8 * 3/8"	15 kg	1500 piece	10 gm
1/2 * 1"	16 kg	200 piece	From 70 : 80 gm/ piece
1 1/2"			
2"			
	Calculations for lightest weight per piece		Weight of piece is as client request

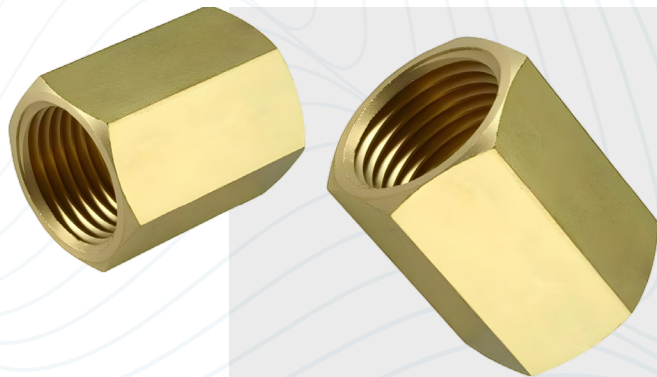
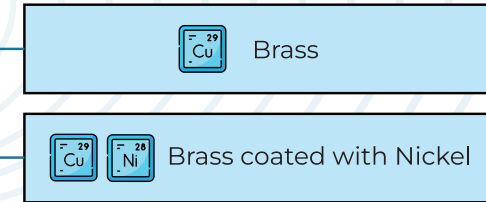




## Brass HEX SOCKET



Material

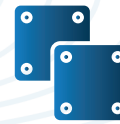


The usage of brass reducers in brass fittings is to facilitate the connection and adaptation of plumbing systems by accommodating changes in pipe size or diameter.

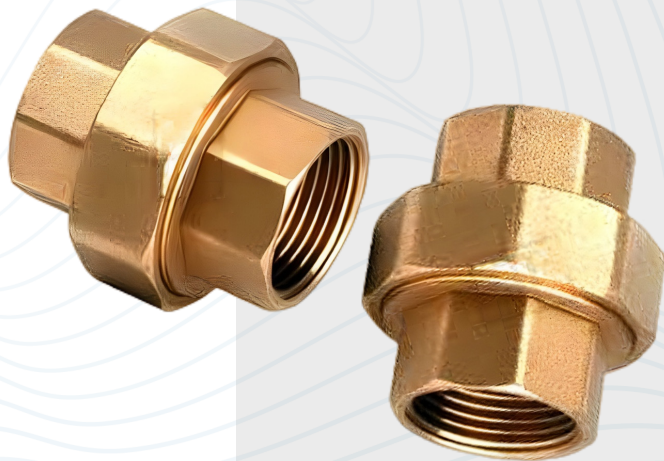
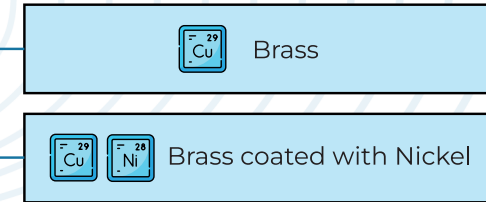
SIZE	Weight in carton	Qty in carton	
1/2"	12.5 kg	500 piece	From 25 : 45 gm/ piece
3/4"	16 kg	400 piece	From 40 : 60 gm/ piece
1"	16 kg	200 piece	From 70 : 80 gm/ piece
1 1/2"	15 kg	150 piece	From 90 : 100 gm/ piece
2"	12 kg	100 piece	From 110 : 120 gm/ piece
	Calculations for lightest weight per piece		Weight of piece is as client request



## Brass UNION



Material



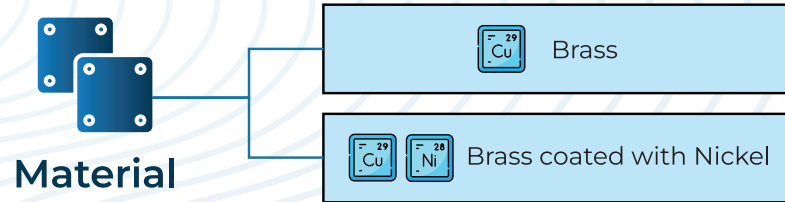
The main usage of Brass Unions in brass fittings is to provide a removable and reliable joint in plumbing systems.

SIZE	Weight in carton	Qty in carton	
1/2"	26 kg	200 piece	From 90 : 120 gm/ piece
3/4"	26 kg	150 piece	From 175 : 170 gm/ piece
1"	27 kg	120 piece	From 230 : 225 gm/ piece
1 1/2"	29 kg	100 piece	From 290 : 280 gm/ piece
2"			
	Calculations for lightest weight per piece		Weight of piece is as client request





## Brass NUTS

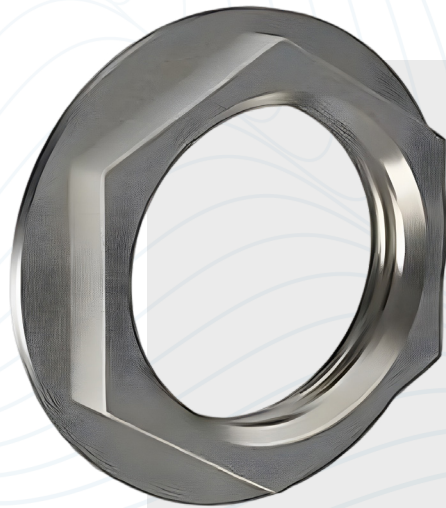
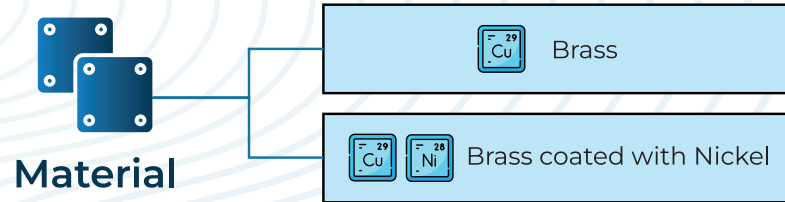


The main usage of brass nuts in brass fittings is to securely fasten and maintain threaded connections in plumbing and mechanical systems.

SIZE	Weight in carton	Qty in carton	
1/2"	25 kg	1000 piece	From 25 : 20 gm/ piece
3/4"			
1"			
1 1/2"			
2"			
	Calculations for lightest weight per piece		Weight of piece is as client request



## Backnut female



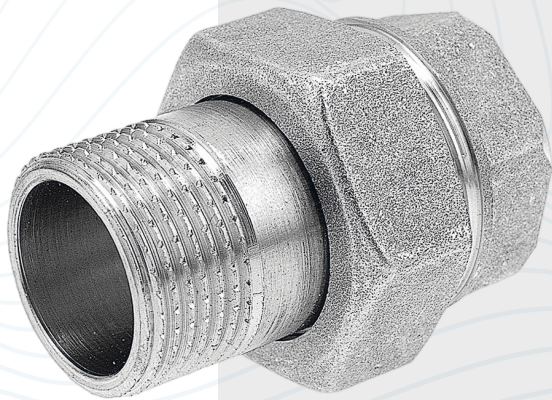
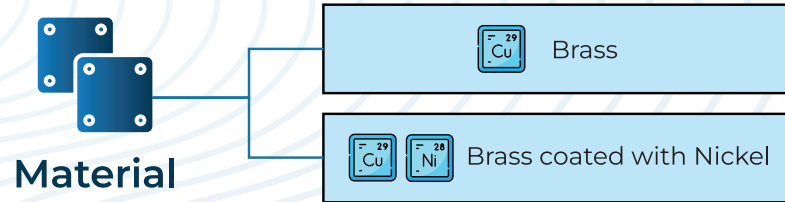
The main usage of a Backnut female in brass fittings is to provide a secure and reliable method for fastening and tightening male threaded components in plumbing and fluid handling systems.

SIZE	Weight in carton	Qty in carton	
1/2"	12.5 kg	500 piece	From 25 : 45 gm/ piece
3/4"			
1"			
1 1/2"			
2"			
	Calculations for lightest weight per piece		Weight of piece is as client request





## Chrome Straight Union With O-Ring

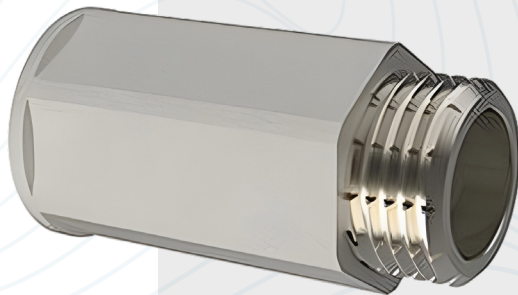
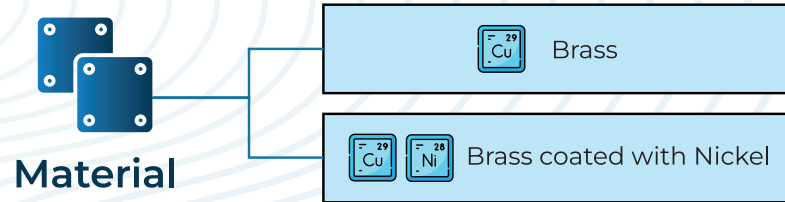


the main usage of a Chrome Straight Union with O-Ring in brass fittings is to provide a durable, corrosion-resistant, and aesthetically pleasing connection point in plumbing systems.

SIZE	Weight in carton	Qty in carton	
1/2"	12.5 kg	500 piece	From 25 : 45 gm/ piece
3/4"			
1"			
1 1/2"			
2"			
	Calculations for lightest weight per piece		Weight of piece is as client request



## Extension-FxM

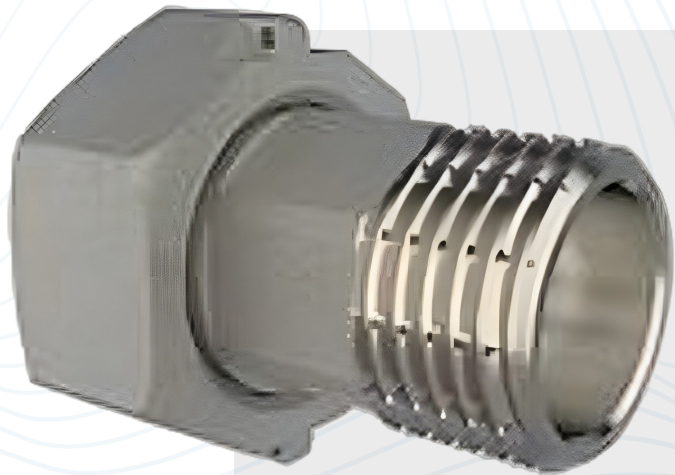
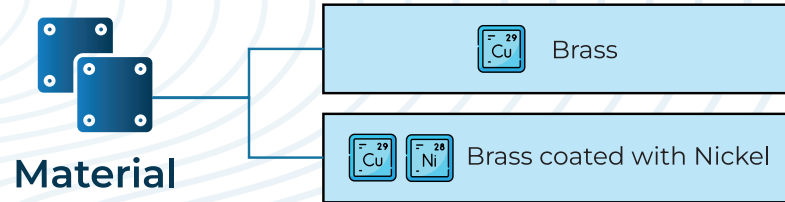


The main usage of an Extension-FxM brass fitting is to provide a versatile and reliable means to extend pipe runs, adjust pipe lengths, or connect different components in plumbing and fluid handling systems.

SIZE	Weight in carton	Qty in carton	
1/2"	22.5 kg	250 piece	From 90 : 120 gm/ piece
3/4"			
1"			
1 1/2"			
2"			
	Calculations for lightest weight per piece		Weight of piece is as client request



## Fitting FxM



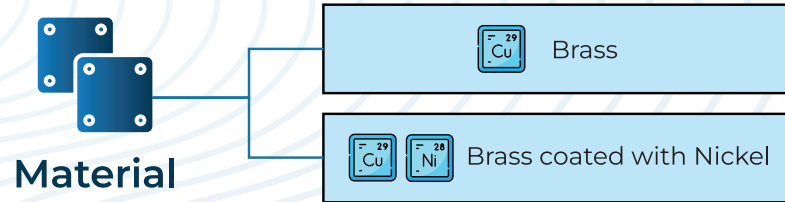
The main usage of a Fitting FxM brass fitting is to provide a versatile and reliable means to connect, adapt, or transition between different components or sections of piping in plumbing and fluid handling systems.

SIZE	Weight in carton	Qty in carton	
1/2"	26 kg	200 piece	From 90 : 120 gm/ piece
3/4"			
1"			
1 1/2"			
2"			
	Calculations for lightest weight per piece		Weight of piece is as client request





## Hexagonal Extension

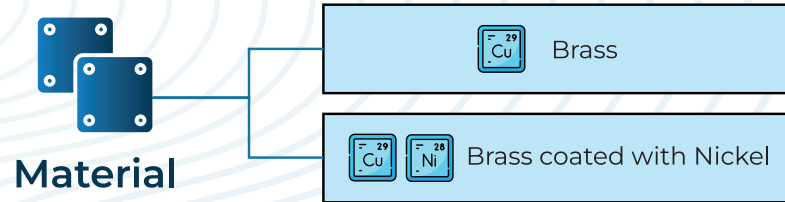


The main usage of a Hexagonal Extension in brass fittings is to provide a reliable and durable means to extend pipe or fitting lengths in plumbing and fluid handling systems.

SIZE	Weight in carton	Qty in carton	
1/2"	15 kg	500 piece	From 25 : 45 gm/ piece
3/4"			
1"			
1 1/2"			
2"			
	Calculations for lightest weight per piece		Weight of piece is as client request



## Hose Nipple FxF



The main usage of a Hose Nipple FxF brass fitting is to provide a reliable and adaptable means to connect hoses with female threaded ends to plumbing systems or other fittings with female threaded ends.

SIZE	Weight in carton	Qty in carton	
1/2"	11.250 kg	450 piece	From 25 : 45 gm/ piece
3/4"	18 kg	400 piece	From 55 : 65 gm/ piece
1"	16 kg	200 piece	From 75 : 85 gm/ piece
1 1/2"	10 kg	100 piece	From 95 : 105 gm/ piece
2"			
	Calculations for lightest weight per piece		Weight of piece is as client request

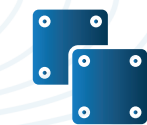


**Plumbing**





## Brass Ball Valve – Lever Handle – FxF Threads



Material



Brass



Brass coated with Nickel



# Available sizes are $\frac{1}{2}$ to 2"

The main usage of a Hexagonal Extension in brass fittings is to provide a reliable and durable means to extend pipe or fitting lengths in plumbing and fluid handling systems.



## Brass Ball Valve – Lever Handle – FxM Threads



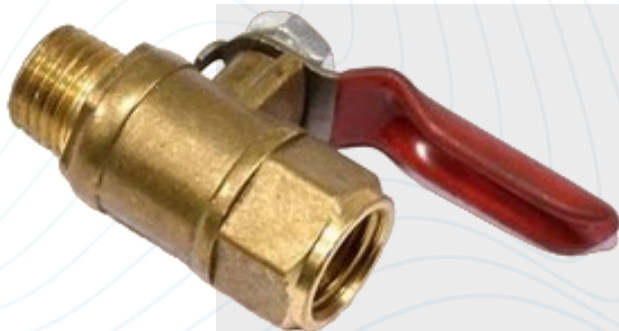
Material



Brass



Brass coated with Nickel

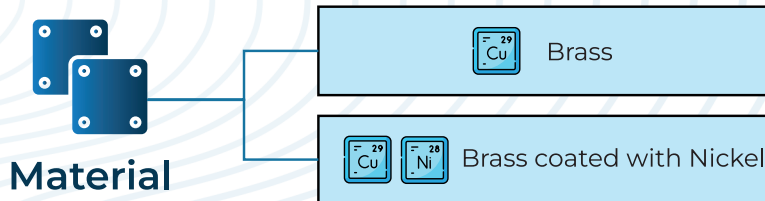


# Available sizes are $\frac{1}{2}$ to 2"

The main usage of a Hexagonal Extension in brass fittings is to provide a reliable and durable means to extend pipe or fitting lengths in plumbing and fluid handling systems.



## Brass Bibcock

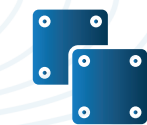


The main usage of a Brass Bibcock in brass fittings is to provide a durable, reliable, and easy-to-use outdoor water supply solution.





## BRASS GATE VALVE



Material



Brass



Brass coated with Nickel



**Available sizes are  
 $\frac{1}{2}$  to 2"**

The main usage of a Brass Gate Valve in brass fittings is to provide a robust and efficient method for controlling the flow of liquids in plumbing and fluid handling systems.



## Female-Female Brass Ball Valve



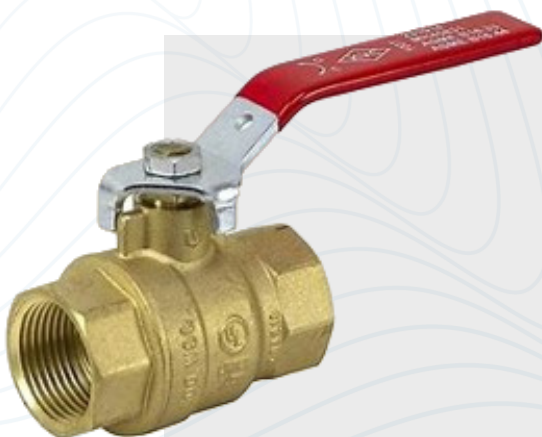
Material



Brass



Brass coated with Nickel

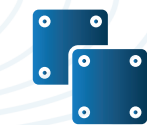


**Available sizes are  
 $\frac{1}{2}$  to 2"**

The main usage of a Female-Female Brass Ball Valve in brass fittings is to provide a durable, reliable, and easy-to-operate solution for controlling the flow of liquids in plumbing and fluid handling systems.



## Lever Ball Valve FxF Threads



Material



Brass



Brass coated with Nickel



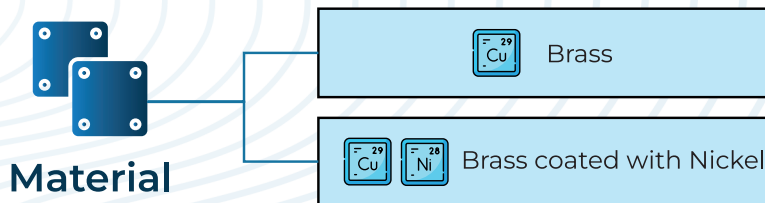
# Available sizes are $\frac{1}{2}$ to 2"

the main usage of a Lever Ball Valve with FxF Threads in brass fittings is to provide a durable, reliable, and easy-to-operate solution for controlling the flow of liquids in plumbing and fluid handling systems.





## PPR BRASS BALL VALVE Female Threads



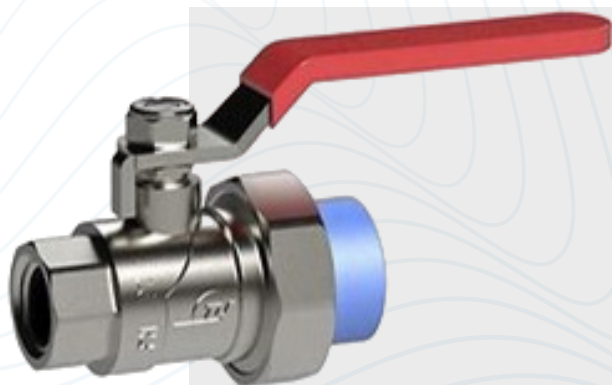
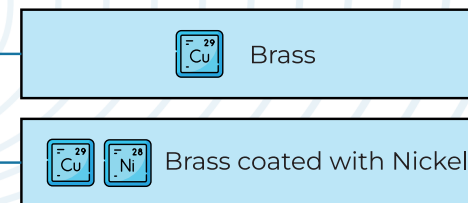
The main usage of a Lever Bibcock with Nickel-Plated Color in brass fittings is to provide a durable, aesthetically pleasing, and corrosion-resistant outdoor water supply solution.



## PPR BRASS BALL VALVE Female Threads



Material

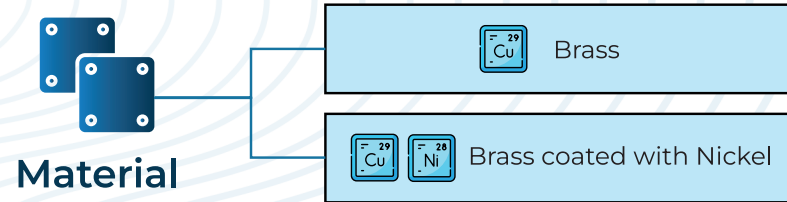


# Available sizes are $\frac{1}{2}$ to 2"

the main usage of a Lever Ball Valve with FxF Threads in brass fittings is to provide a durable, reliable, and easy-to-operate solution for controlling the flow of liquids in plumbing and fluid handling systems.



## PPR BRASS BALL VALVE



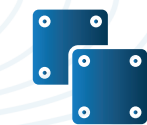
**Available sizes are  
 $\frac{1}{2}$  to 2"**

The main usage of a PPR Brass Ball Valve in brass fittings is to provide a durable, reliable, and efficient solution for controlling the flow of fluids in plumbing systems using PPR pipes.

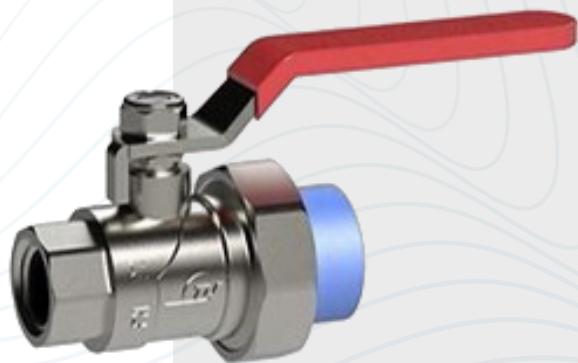
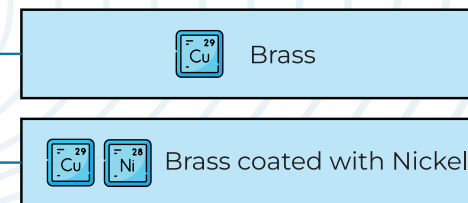




## PPR BRASS BALL VALVE Female Threads



Material



# Available sizes are $\frac{1}{2}$ to 2"

The main usage of a PPR Brass Ball Valve with FxM Threads in brass fittings is to provide a robust, reliable, and efficient solution for controlling the flow of fluids in plumbing systems using PPR pipes.



## Water Ball Valve – Butterfly Handle – FXF Thread



Material



Brass



Brass coated with Nickel

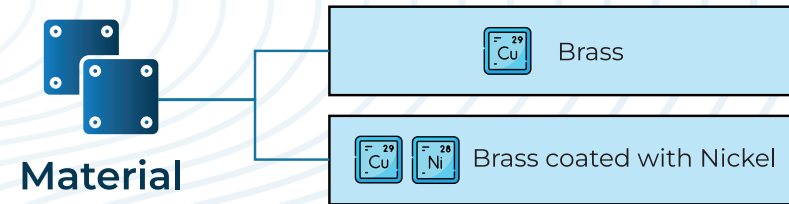


# Available sizes are $\frac{1}{2}$ to 2"

The main usage of a Water Ball Valve with Butterfly Handle and FXF Threads in brass fittings is to provide a durable, reliable, and ergonomic solution for controlling the flow of liquids in plumbing and fluid handling systems.



## Water Ball Valve – Butterfly Handle – FXM Thread



**Available sizes are  
 $\frac{1}{2}$  to 2"**

The main usage of a Water Ball Valve with Butterfly Handle and FXM Threads in brass fittings is to provide a durable, reliable, and ergonomic solution for controlling the flow of liquids in plumbing and fluid handling systems.



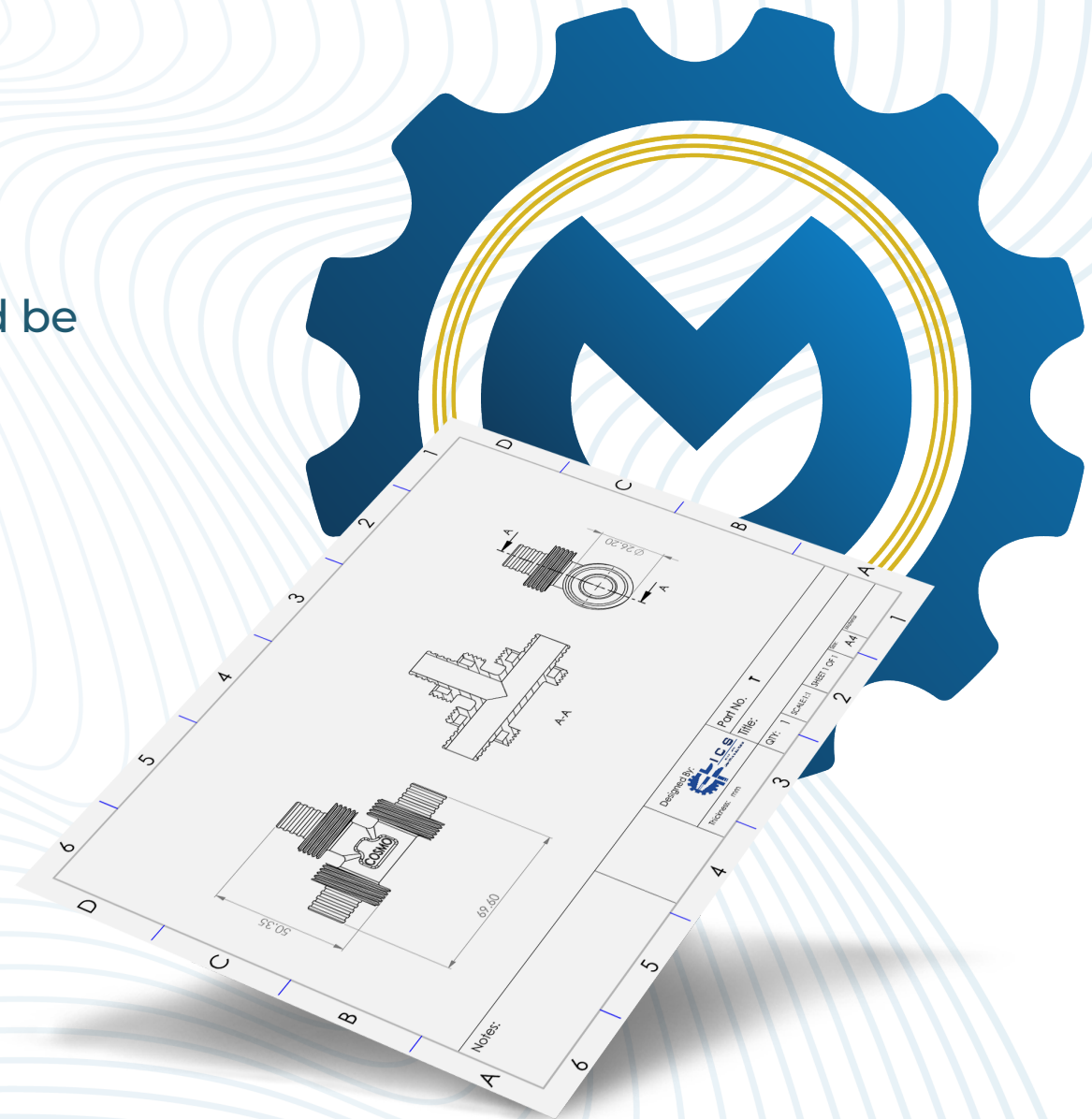
## Engineering service

Each brass fitting product could be customized as per your :

Drawings

Molds


Specific available specimens



 [www.mrqah.com](http://www.mrqah.com)  [info@mrqah.com](mailto:info@mrqah.com)

### **Egypt**

 El Shorouk City, Neighborhood 1, Plot 43, Cairo

 +201 110 625 155  +201 012 138 086

### **Saudi Arabia**

 6899 Abdullah Al Hamadhani, Al Malaz, Dist Riyadh

 +966 54 926 1967  +966 56 734 8975

